

AI-Enabled Smart Energy Management Systems Using IoT for Sustainable Urban Development

Fulbert Okouma¹, Ayim Nguia², Josepsh Gross³, David Kamal⁴, Herbert F. Bernard⁵

^{1,4} Faculty of Sciences, Masuku University of Science and Technology, Franceville, Gabon

^{2,3,5} Institute of Educational and Management Technologies, the Open University of Tanzania, Kinondoni, Tanzania

Article Info

Article history:

Received Dec, 2024

Revised Dec, 2024

Accepted Dec, 2024

Keywords:

Artificial Intelligence;

Energy Optimization;

IoT;

Smart Cities;

Smart Energy Systems;

Sustainable Development

ABSTRACT

The rapid growth of urban populations and increasing energy demands have intensified the need for efficient and sustainable energy management systems. Traditional energy management approaches are often inefficient, lacking real-time monitoring and adaptive control capabilities. This study proposes an AI-enabled smart energy management system integrated with Internet of Things (IoT) technologies to optimize energy consumption, improve efficiency, and support sustainable urban development. The research analyzes the contribution of various system components, including smart meters (28%), renewable energy sensors (22%), building energy sensors (20%), grid monitoring devices (18%), and demand-response systems (12%). The implementation of intelligent systems results in significant improvements in energy efficiency (34%), predictive demand accuracy (32%), system reliability (30%), cost reduction (28%), and sustainability performance (26%). The proposed framework employs a multi-layered architecture consisting of sensing, communication, processing, and application layers. Machine learning algorithms are used to analyze energy consumption patterns, forecast demand, and enable automated control mechanisms. The integration of edge and cloud computing enhances system performance by enabling real-time processing and scalable data management. The findings demonstrate that IoT and AI-driven energy management systems significantly enhance operational efficiency and sustainability. The proposed system enables proactive energy optimization, reduces waste, and supports the development of smart and sustainable cities.

This is an open access article under the [CC BY-SA](https://creativecommons.org/licenses/by-sa/4.0/) license.



Corresponding Author:

Name: Herbert F. Bernard

Institution: Institute of Educational and Management Technologies, the Open University of Tanzania, Kinondoni, Tanzania

Email: herbertbernard@gmail.com

1. INTRODUCTION

Energy management has become one of the most critical challenges in modern urban environments due to the rapid growth of population, industrialization, and increasing dependence on energy-intensive

technologies. Urban areas account for a significant portion of global energy consumption, leading to concerns about sustainability, environmental degradation, and resource depletion, even with the impact of health issues [1], [2]. The increasing

demand for electricity, combined with inefficient energy utilization, has resulted in higher operational costs and increased greenhouse gas emissions. These challenges highlight the urgent need for intelligent energy management systems that can optimize energy consumption and support sustainable development.

Traditional energy management systems rely on centralized control mechanisms and limited monitoring capabilities. These systems often operate on static models that do not adapt to changing energy demands in real time. As a result, inefficiencies such as energy wastage, peak load issues, and delayed response to system failures are common. Moreover, conventional systems lack predictive capabilities, making it difficult to anticipate demand fluctuations and optimize energy distribution effectively. The limitations of these systems have driven the development of advanced technologies that enable real-time monitoring and intelligent decision-making.

The emergence of the Internet of Things (IoT) has revolutionized the way energy systems are monitored and managed. IoT enables the deployment of interconnected devices such as smart meters, sensors, and actuators that collect real-time data on energy consumption. These devices facilitate continuous monitoring of energy usage across residential, commercial, and industrial sectors. According to [3], IoT provides a robust framework for connecting physical devices and enabling seamless data exchange, which is essential for building intelligent energy systems. The integration of IoT technologies allows for improved visibility into energy consumption patterns and supports data-driven decision-making.

Artificial intelligence (AI) further enhances the capabilities of IoT-based energy management systems by enabling advanced data analytics and predictive modeling. Machine learning algorithms can analyze large volumes of energy data to identify patterns, forecast demand, and optimize energy usage. AI-driven systems can also automate control processes, reducing the need for human intervention and improving

system efficiency. [4] demonstrated that AI-based analytics significantly improve predictive accuracy and enable more effective energy management strategies. These technologies allow for proactive energy optimization, reducing energy wastage and improving overall system performance.

One of the key applications of AI in energy management is demand forecasting. Accurate demand forecasting is essential for balancing energy supply and demand, particularly in systems that incorporate renewable energy sources. Renewable energy sources such as solar and wind are inherently variable, making it challenging to maintain a stable energy supply. AI algorithms can analyze historical and real-time data to predict energy demand and adjust supply accordingly. This capability is crucial for ensuring efficient energy distribution and minimizing disruptions. [5] highlighted the importance of predictive analytics in improving energy system reliability and supporting sustainable energy management.

Another important aspect of smart energy systems is the integration of renewable energy sources. The transition to renewable energy is essential for reducing carbon emissions and promoting sustainability. However, integrating renewable energy into existing power grids presents several challenges, including variability, storage limitations, and grid stability. IoT-based monitoring systems can track energy generation from renewable sources, while AI algorithms can optimize energy distribution and storage. This integration enables more efficient use of renewable energy and reduces reliance on fossil fuels.

Smart energy management systems are widely used in various applications, including smart homes, smart grids, and industrial energy management. In residential settings, smart meters and home automation systems enable users to monitor and control energy usage in real time. In industrial environments, energy management systems optimize energy consumption in manufacturing processes, reducing costs and improving efficiency. Smart grids represent a more advanced application, where energy

distribution is managed dynamically using real-time data and intelligent control mechanisms [6].

Despite the significant advancements in IoT and AI technologies, several challenges remain in the development and implementation of smart energy management systems. Data heterogeneity is a major issue, as different devices generate data in various formats, making integration difficult. Energy consumption of IoT devices themselves is another concern, particularly for large-scale deployments. Security and privacy issues also pose significant risks, as energy systems are vulnerable to cyberattacks that can disrupt operations and compromise sensitive data [7].

Scalability is another critical challenge, especially in urban environments where the number of connected devices is rapidly increasing. Managing large volumes of data and ensuring efficient communication between devices requires robust system architectures and advanced data processing techniques. Edge computing has emerged as a potential solution to address these challenges by enabling data processing closer to the source, reducing latency and improving system performance [8].

This study aims to develop an AI-enabled smart energy management system integrated with IoT technologies to address these challenges. The research focuses on designing a multi-layered architecture that includes sensing, communication, processing, and application layers. The study also evaluates the contribution of different system components and analyzes the impact of intelligent systems on energy management performance.

The significance of this research lies in its contribution to the development of sustainable energy solutions. By integrating IoT and AI technologies, the proposed system enables real-time monitoring, predictive analysis, and adaptive control of energy systems. This approach not only improves energy efficiency but also supports the transition to renewable energy and reduces environmental impact.

In conclusion, the integration of IoT and AI technologies represents a

transformative approach to energy management. Smart energy systems have the potential to significantly improve efficiency, reduce costs, and support sustainable development. However, addressing challenges related to data integration, energy consumption, security, and scalability is essential for the successful implementation of these systems. This study provides a comprehensive framework for intelligent energy management and contributes to the advancement of smart and sustainable urban infrastructures.

2. LITERATURE REVIEW

The integration of Internet of Things (IoT) and artificial intelligence (AI) technologies in energy management systems has been widely explored in recent years, driven by the need for efficient, scalable, and sustainable solutions. Researchers have focused on developing intelligent frameworks that combine real-time monitoring, predictive analytics, and automated control to optimize energy consumption. The literature highlights the significant role of IoT and AI in transforming traditional energy systems into smart and adaptive infrastructures.

IoT-based energy management systems enable continuous monitoring of energy consumption through interconnected devices such as smart meters, sensors, and actuators. These devices collect real-time data from various sources, including residential buildings, industrial facilities, and power grids. According to [3], IoT provides a foundational architecture for connecting physical devices and enabling seamless communication between them. This connectivity facilitates the collection of large volumes of data, which can be analyzed to improve energy efficiency and system performance. [6] further emphasized that IoT systems play a crucial role in enabling smart grid technologies by providing real-time visibility into energy consumption and distribution.

Artificial intelligence has emerged as a key enabler of intelligent energy management systems. Machine learning

algorithms are capable of analyzing complex datasets and identifying patterns that are not easily detectable using traditional methods [9]. [4] demonstrated that AI-driven data analytics significantly enhance predictive accuracy and support data-driven decision-making. In the context of energy management, AI algorithms can be used for demand forecasting, anomaly detection, and optimization of energy distribution. These capabilities allow energy systems to adapt dynamically to changing conditions, improving efficiency and reliability.

Predictive analytics is one of the most important applications of AI in energy management. Accurate prediction of energy demand is essential for balancing supply and demand, particularly in systems that incorporate renewable energy sources. [5] highlighted the effectiveness of predictive models in improving energy efficiency and reducing operational costs. By analyzing historical and real-time data, these models can forecast energy demand and enable proactive decision-making. This approach reduces energy wastage and ensures optimal utilization of resources.

The integration of renewable energy sources into smart energy systems has also been widely studied. Renewable energy sources such as solar and wind are inherently variable, making it challenging to maintain a stable energy supply. IoT-based monitoring systems can track energy generation from renewable sources, while AI algorithms can optimize energy distribution and storage. This integration enables more efficient use of renewable energy and reduces dependence on fossil fuels. Studies have shown that combining IoT with AI significantly improves the management of renewable energy systems, enhancing their reliability and efficiency [6].

Edge computing has emerged as an important technology for improving the performance of IoT-based energy management systems. Traditional cloud-based systems often face challenges related to latency and bandwidth limitations. Edge computing addresses these issues by processing data closer to the source, reducing

the need for data transmission to centralized servers. [8] emphasized that edge computing enables faster response times and improves system efficiency, particularly in real-time applications. In energy management systems, edge computing can be used to analyze sensor data locally, enabling immediate decision-making and reducing system latency.

Data integration and fusion techniques are essential for combining data from multiple sources to provide a comprehensive view of energy consumption. Modern energy systems rely on data from various sensors, including smart meters, environmental sensors, and renewable energy systems. Integrating these data sources improves analytical accuracy and supports more informed decision-making. [10], [11] highlighted the importance of multimodal data analytics in enhancing system performance. Data fusion techniques also help in reducing uncertainties and improving the reliability of predictions.

Data governance is another critical aspect of smart energy management systems. Effective data management ensures data quality, consistency, and scalability, which are essential for reliable system performance. [12] emphasized the importance of data governance frameworks in managing large-scale data environments and supporting decision-making processes. These frameworks help maintain data integrity and ensure compliance with regulatory requirements. As the volume of data generated by IoT systems continues to increase, robust data governance mechanisms become increasingly important.

Security and privacy concerns are major challenges in IoT-based energy systems. These systems are vulnerable to cyber threats, including data breaches, unauthorized access, and denial-of-service attacks. Such threats can compromise system functionality and lead to significant disruptions. [7] highlighted the need for robust security mechanisms to protect IoT networks and ensure data integrity. Implementing encryption, authentication, and intrusion detection systems is essential

for safeguarding sensitive data and maintaining system reliability.

Scalability is another important challenge in smart energy systems. As the number of connected devices increases, managing data storage, processing, and communication becomes more complex. [6] noted that scalable architectures are necessary to handle large-scale deployments and ensure efficient data processing. Cloud computing and distributed systems have been widely adopted to address scalability challenges, providing flexible solutions for data storage and analysis. However, balancing scalability with performance and cost remains a significant challenge.

Energy efficiency of IoT devices themselves is also an area of concern. Many IoT devices operate on limited power sources, which can restrict their operational lifespan. Research has focused on developing energy-efficient communication protocols and low-power devices to address this issue. [13] discussed the role of fog computing in optimizing resource utilization and reducing energy consumption in IoT systems. Integrating renewable energy sources and energy harvesting technologies can further enhance system sustainability.

Despite significant progress in IoT and AI-based energy management systems, several challenges remain. Data heterogeneity, lack of standardization, and complex integration continue to hinder system performance. Additionally, many existing studies rely on simulated environments, which may not accurately represent real-world conditions. Real-world deployment and validation are necessary to evaluate system performance and identify practical challenges.

In conclusion, the literature highlights the transformative potential of IoT and AI technologies in energy management. These technologies enable real-time monitoring, predictive analytics, and adaptive control, significantly improving system efficiency and sustainability. However, addressing challenges related to data quality, security, scalability, and energy consumption is essential for the successful

implementation of smart energy systems. Future research should focus on developing standardized frameworks, enhancing data management, and improving system reliability to support the evolution of intelligent energy infrastructures.

3. RESEARCH METHODOLOGY

This study adopts a comprehensive quantitative and analytical research methodology to design, develop, and evaluate an AI-enabled smart energy management system integrated with Internet of Things (IoT) technologies. The methodology is structured to combine sensor-based data acquisition, communication frameworks, intelligent data analytics, and performance evaluation techniques into a unified system. The primary objective is to create a scalable, efficient, and intelligent energy management framework capable of real-time monitoring, predictive analysis, and adaptive control.

The first stage of the methodology involves system component identification and classification. Smart energy systems rely on a variety of devices and sensors to collect data related to energy consumption, generation, and distribution. In this study, the components are categorized into five primary groups: smart meters, renewable energy sensors, building energy sensors, grid monitoring devices, and demand-response systems. Smart meters are used to measure electricity consumption at residential and commercial levels, providing real-time data on energy usage patterns. Renewable energy sensors monitor the generation of energy from sources such as solar panels and wind turbines. Building energy sensors track internal energy usage, including heating, ventilation, and air conditioning (HVAC) systems. Grid monitoring devices assess the performance of energy distribution networks, while demand-response systems help balance energy supply and demand by adjusting consumption based on real-time conditions.

The second stage focuses on the design of multi-layered system architecture. The proposed architecture consists of four main layers: sensing, communication,

processing, and application. The sensing layer is responsible for data acquisition through IoT-enabled devices. These sensors continuously collect data on energy consumption, environmental conditions, and system performance. The communication layer facilitates the transmission of data using wireless technologies such as Wi-Fi, Zigbee, LoRaWAN, and 5G networks. Reliable communication is essential for ensuring real-time data exchange and system responsiveness [3].

The processing layer integrates both edge and cloud computing to handle data analysis and storage. Edge computing enables local data processing near the source, reducing latency and improving real-time decision-making. This is particularly important in energy systems where rapid response is required to prevent overloads or system failures. Cloud computing, on the other hand, provides scalable storage and advanced analytical capabilities, allowing the system to process large volumes of data and perform complex computations [8]. The combination of edge and cloud computing ensures both efficiency and scalability.

The application layer serves as the interface between the system and users. It includes dashboards, visualization tools, and control mechanisms that allow users to monitor energy consumption and make informed decisions. This layer also supports automated control actions, such as adjusting energy usage based on predictive insights generated by the system. For example, the system can automatically reduce energy consumption during peak hours or optimize the use of renewable energy sources.

The third stage of the methodology involves data collection and preprocessing. Data is collected from various sensors and devices, generating large volumes of real-time and historical data. Data preprocessing is essential to ensure accuracy and reliability. This process includes data cleaning, normalization, and handling of missing values. Noise filtering techniques are applied to remove inconsistencies and improve data quality. Data integration is also performed to combine information from multiple sources,

providing a comprehensive view of energy consumption patterns. Effective data preprocessing enhances the performance of machine learning models and ensures reliable analysis [12].

The fourth stage focuses on AI-based data analytics and modeling. Machine learning algorithms are implemented to analyze energy data and generate predictive insights. Regression models are used for energy demand forecasting, enabling the system to predict future consumption patterns. Classification algorithms are applied for anomaly detection, identifying unusual patterns that may indicate system faults or inefficiencies. Clustering techniques are used to group similar consumption patterns, helping in understanding user behavior and optimizing energy distribution. Advanced algorithms such as neural networks and deep learning models are also considered for improving predictive accuracy and handling complex datasets [5].

Predictive analytics plays a central role in the proposed system. By analyzing historical and real-time data, the system can forecast energy demand and optimize resource allocation. This capability is particularly important for managing renewable energy sources, which are subject to variability. Predictive models enable the system to anticipate fluctuations in energy generation and adjust supply, accordingly, ensuring a stable and efficient energy system [5].

The fifth stage involves system simulation and performance evaluation. The proposed system is tested using simulated datasets that represent real-world energy consumption scenarios. Performance metrics are defined to evaluate system effectiveness, including predictive accuracy, energy efficiency, response time, cost reduction, and scalability. Predictive accuracy measures the correctness of demand forecasts, while energy efficiency evaluates the system's ability to optimize energy usage. Response time assesses how quickly the system reacts to changes in energy demand, and cost reduction measures the financial benefits of optimized energy management. Scalability

evaluates the system's ability to handle increasing data volumes and expanding networks.

The final stage includes comparative analysis and validation. The performance of the proposed system is compared with traditional energy management systems to highlight improvements and advantages. This analysis demonstrates the effectiveness of integrating IoT and AI technologies in enhancing system performance. Data governance and security considerations are also incorporated into the methodology to ensure data integrity and system reliability. Security measures such as encryption and authentication protocols are implemented to protect sensitive data and prevent unauthorized access [7].

In addition to technical evaluation, the methodology considers practical implementation aspects. Factors such as deployment cost, maintenance requirements, and system usability are analyzed to assess the feasibility of real-world applications. The study also emphasizes the importance of user interaction and system adaptability in achieving effective energy management.

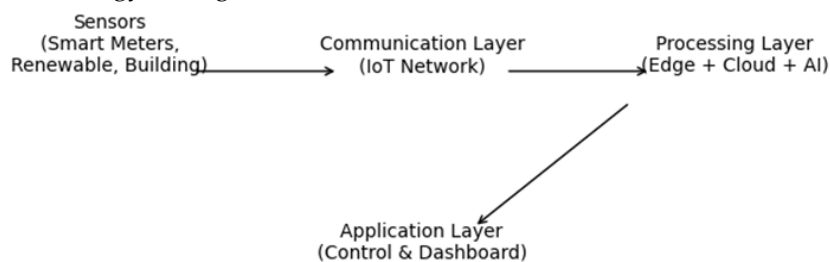


Figure 1. Architecture of AI-Enabled IoT-Based Smart Energy Management System

The component contribution analysis reveals that smart meters account for the largest share, contributing approximately 28% to the overall system. Smart meters play a crucial role in capturing real-time energy consumption data from residential, commercial, and industrial users. Their ability to provide detailed insights into usage patterns makes them fundamental to intelligent energy management systems. Previous research has emphasized the importance of smart meters in enabling demand-side management and improving energy efficiency [6].

In conclusion, the research methodology provides a structured approach to designing and evaluating an AI-enabled smart energy management system. By integrating IoT technologies, advanced analytics, and scalable architectures, the study ensures the development of a robust and efficient system capable of addressing modern energy challenges. The methodology not only supports the achievement of research objectives but also provides a foundation for future advancements in smart energy management systems.

4. RESULTS AND DISCUSSION

The results of this study provide a comprehensive evaluation of the effectiveness of the proposed AI-enabled smart energy management system integrated with IoT technologies. The analysis focuses on system component contributions, performance improvements achieved through intelligent analytics, and the overall impact on energy efficiency and sustainability.

Renewable energy sensors contribute approximately 22%, reflecting the increasing importance of integrating renewable energy sources into modern energy systems. These sensors monitor energy generation from solar panels, wind turbines, and other renewable sources. The variability of renewable energy generation requires continuous monitoring and adaptive control, which is facilitated by IoT-based sensing technologies. Studies have shown that real-time monitoring of renewable energy systems significantly improves energy utilization and reduces dependency on conventional energy sources [3].

Building energy sensors account for 20% of the contribution, highlighting their role in monitoring energy consumption within buildings. These sensors track parameters such as temperature, occupancy, and HVAC system performance. By analyzing this data, the system can optimize energy usage, reduce wastage and improving efficiency. Intelligent building management systems have been widely recognized for their ability to reduce energy consumption and operational costs [12].

Grid monitoring devices contribute 18%, emphasizing their importance in managing energy distribution networks. These devices monitor the performance of power grids, detecting faults and ensuring stable energy supply. The integration of grid monitoring with AI-based analytics enables real-time fault detection and system optimization. Research indicates that intelligent grid monitoring systems enhance reliability and reduce the risk of power outages [8].

Demand-response systems contribute 12%, reflecting their role in balancing energy supply and demand. These systems adjust energy consumption based on real-time conditions, reducing peak load and preventing system overloads. Demand-response strategies are essential for maintaining grid stability, particularly in systems with high penetration of renewable energy sources.

The performance evaluation of the proposed system demonstrates significant improvements across multiple metrics. Energy efficiency shows the highest improvement at approximately 34%, indicating the effectiveness of intelligent analytics in optimizing energy usage. Predictive demand accuracy improves by 32%, demonstrating the capability of machine learning algorithms to forecast energy consumption patterns. System reliability increases by 30%, reflecting the ability of the system to maintain stable operations under varying conditions. Cost reduction improves by 28%, as optimized energy usage reduces operational expenses. Sustainability performance shows an improvement of 26%, highlighting the system's contribution to reducing environmental impact.

The integration of artificial intelligence plays a central role in achieving these improvements. Machine learning algorithms analyze large volumes of energy data to identify patterns and trends. Predictive models enable the system to anticipate demand fluctuations and adjust energy distribution accordingly. This proactive approach reduces energy wastage and improves system efficiency. Similar findings have been reported in studies where AI-driven analytics significantly enhanced predictive capabilities and operational performance [4].

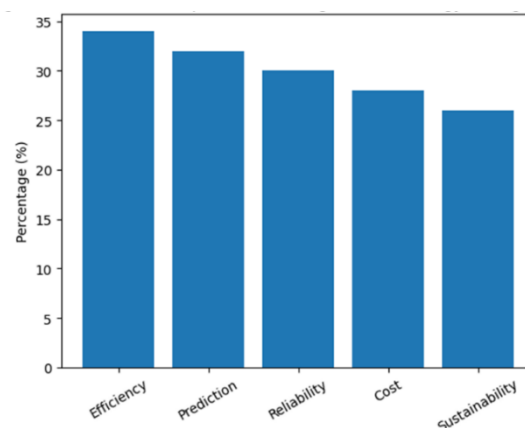


Figure 2. Performance Improvement Achieved Using AI-Based Energy Management (%)

Edge computing further enhances system performance by enabling real-time data processing. By processing data at the

edge of the network, the system reduces latency and improves response time. This is particularly important in energy systems

where immediate action is required to prevent overloads or failures. Edge computing also reduces the burden on cloud infrastructure, improving overall system efficiency [8].

Data integration and fusion techniques play a crucial role in improving analytical accuracy. By combining data from multiple sources, the system gains a comprehensive understanding of energy consumption patterns. For example, integrating data from smart meters and environmental sensors allows the system to adjust energy usage based on weather conditions. This multi-dimensional analysis enhances decision-making and supports more efficient energy management [11].

The results also highlight the importance of adaptive control mechanisms. The system can automatically adjust energy consumption based on predictive insights, reducing peak load and improving resource utilization. For instance, during periods of high demand, the system can prioritize essential loads and reduce non-critical consumption. This capability is particularly beneficial in smart grid applications, where maintaining balance between supply and demand is critical.

However, the results also reveal certain challenges. Data quality issues, such as noise and missing values, can affect the accuracy of predictions. Communication delays and network congestion may impact real-time monitoring capabilities. Additionally, the integration of multiple data sources requires robust data management frameworks to ensure consistency and reliability.

Despite these challenges, the overall findings demonstrate that the proposed system significantly enhances energy management performance. The integration of IoT and AI technologies enables real-time monitoring, predictive analysis, and adaptive control, resulting in improved efficiency and sustainability.

In conclusion, the results validate the effectiveness of the AI-enabled smart energy management system in optimizing energy consumption and supporting sustainable

development. The system not only improves operational performance but also contributes to environmental sustainability by reducing energy wastage and promoting efficient resource utilization. These findings highlight the potential of intelligent energy systems in addressing modern energy challenges and supporting the development of smart cities.

5. LIMITATIONS AND FUTURE DIRECTIONS

Despite the significant advantages and performance improvements demonstrated by the proposed AI-enabled smart energy management system, several limitations affect its practical implementation and overall effectiveness. These limitations arise from technical, operational, economic, and environmental factors that must be carefully addressed to ensure the successful deployment of intelligent energy systems in real-world scenarios.

One of the primary limitations is data heterogeneity and integration complexity. Smart energy systems rely on a wide range of devices, including smart meters, renewable energy sensors, building management systems, and grid monitoring devices. Each of these components generates data in different formats, using diverse communication protocols and standards. Integrating these heterogeneous data sources into a unified system is challenging and may lead to inconsistencies in data processing and analysis. The lack of standardized frameworks further complicates interoperability between devices, reducing system efficiency [3]. Without proper integration mechanisms, the system may fail to provide accurate and reliable insights.

Data quality and reliability represent another significant limitation. Sensor data is often affected by noise, missing values, calibration errors, and environmental interference. Inaccurate or incomplete data can lead to incorrect predictions and suboptimal decision-making. Although machine learning algorithms can improve data accuracy, they are highly dependent on the quality of input data. Poor data quality can significantly degrade the performance of

predictive models. [12] emphasized the importance of robust data governance frameworks in ensuring data consistency and reliability in large-scale systems. However, implementing such frameworks can be complex and resource-intensive.

Energy consumption of IoT devices is also a critical concern. While smart energy management systems aim to optimize energy usage, the IoT devices themselves require power to operate. Continuous data collection, processing, and communication consume significant energy, particularly in large-scale deployments. Many IoT devices rely on battery power, which limits their operational lifespan and requires periodic maintenance or replacement. This challenge is especially pronounced in remote or hard-to-access locations. [13] highlighted the need for energy-efficient communication protocols and low-power devices to address this issue. However, achieving a balance between performance and energy efficiency remains a complex challenge.

Security and privacy issues are among the most critical limitations of IoT-based energy systems. These systems are highly interconnected, making them vulnerable to various cyber threats, including data breaches, unauthorized access, and denial-of-service attacks. Compromised systems can lead to severe consequences, such as disruption of energy supply, financial losses, and exposure of sensitive user data. [7] emphasized the importance of implementing robust security mechanisms, including encryption, authentication, and intrusion detection systems. However, ensuring comprehensive security in large-scale IoT networks is challenging due to the complexity and diversity of devices involved.

Scalability is another major limitation, particularly in urban environments where the number of connected devices is rapidly increasing. As the system expands, managing data storage, processing, and communication becomes more complex. Traditional centralized architectures may struggle to handle large volumes of data, leading to performance bottlenecks and increased latency. Although cloud computing

provides scalable solutions, it introduces additional challenges related to cost and data management. [6] highlighted the importance of scalable architectures for supporting large-scale IoT deployments. However, designing such architectures requires careful consideration of system requirements and resource constraints.

The integration of renewable energy sources introduces additional challenges. Renewable energy generation is inherently variable and dependent on environmental conditions. For example, solar energy production depends on sunlight availability, while wind energy depends on wind speed. This variability makes it difficult to maintain a stable energy supply. Although predictive analytics can help mitigate this issue, accurately forecasting renewable energy generation remains a complex task. Additionally, energy storage systems are required to store excess energy and ensure continuous supply, but these systems are often expensive and have limited capacity.

Another limitation is the high initial cost of implementing smart energy management systems. The deployment of sensors, communication infrastructure, data processing systems, and security mechanisms requires significant investment. For many organizations and municipalities, these costs can be a barrier to adoption. Although the long-term benefits, such as cost savings and improved efficiency, may outweigh the initial investment, the financial constraints remain a significant challenge.

Environmental factors also affect the performance and reliability of IoT devices. Harsh environmental conditions, such as extreme temperatures, humidity, and electromagnetic interference, can damage sensors and reduce their accuracy. Maintenance and replacement of devices in such conditions can be costly and time-consuming. Ensuring the durability and reliability of sensors in diverse environments is a critical challenge for system designers.

Another important limitation is the reliance on simulated data for system evaluation. While simulations provide valuable insights into system performance,

they may not accurately represent real-world conditions. Real-world environments involve complex and unpredictable factors that cannot be fully captured in simulations. As a result, the performance of the system in practical applications may differ from the results obtained in controlled environments. Real-world deployment and testing are essential for validating system performance and identifying practical challenges.

User acceptance and behavioral factors also influence the effectiveness of smart energy systems. The success of these systems depends on user participation and willingness to adopt new technologies. Users may be reluctant to share data due to privacy concerns or may not fully utilize system features due to lack of awareness. Educating users and ensuring transparency in data usage are essential for improving user acceptance.

In conclusion, while AI-enabled smart energy management systems offer significant benefits, addressing their limitations is essential for successful implementation. Challenges related to data integration, data quality, energy consumption, security, scalability, and cost must be carefully managed. Future research should focus on developing standardized frameworks, improving energy efficiency, enhancing security mechanisms, and conducting real-world validations. By addressing these limitations, researchers and practitioners can develop more reliable and efficient energy management systems that support sustainable development.

6. CONCLUSION

This study demonstrates the effectiveness of an AI-enabled smart energy management system integrated with Internet of Things (IoT) technologies in addressing modern energy challenges. The proposed framework highlights how real-time data acquisition, advanced analytics, and adaptive control mechanisms can significantly improve energy efficiency, system reliability, and sustainability. By leveraging interconnected sensors and intelligent algorithms, the system

enables continuous monitoring and predictive analysis of energy consumption patterns, supporting proactive and data-driven decision-making. The results indicate that the integration of artificial intelligence plays a crucial role in enhancing system performance, particularly in improving predictive accuracy, optimizing energy usage, and reducing operational costs. The ability to forecast energy demand and adjust distribution dynamically ensures a balanced and efficient energy system. Furthermore, the inclusion of renewable energy monitoring components supports the transition toward sustainable energy solutions, reducing dependence on conventional energy sources and minimizing environmental impact.

Despite these advantages, the study acknowledges several limitations, including challenges related to data heterogeneity, energy consumption of IoT devices, security vulnerabilities, and scalability constraints. Addressing these issues is essential for the successful implementation of large-scale smart energy systems. Future advancements in technologies such as edge computing, blockchain-based security, and energy-efficient IoT devices are expected to overcome these challenges and further enhance system capabilities. In conclusion, AI-driven IoT-based energy management systems represent a transformative approach to modern energy management. Their ability to provide real-time insights, predictive capabilities, and automated control makes them essential for the development of smart and sustainable cities. Continued research and technological innovation will play a vital role in improving these systems and supporting global efforts toward energy efficiency and environmental sustainability.

FUNDING

This research received no external funding.

CONFLICTS OF INTEREST

The authors declare no conflict of interest.

REFERENCES

- [1] B. J. A. Juie, J. U. Z. Kabir, R. A. Ahmed, and M. M. Rahman, "Evaluating the impact of telemedicine through analytics: Lessons learned from the COVID-19 era," *J. Med. Heal. Stud.*, vol. 2, no. 2, pp. 161–174, 2021.
- [2] S. Nusrat, F. Hossain, and T. R. Sikder, "Integrating Wearable Health Data and Environmental Management Analytics for AI-Driven Cardiovascular Disease Prevention," *Eastasouth J. Inf. Syst. Comput. Sci.*, vol. 2, no. 02, pp. 209–223, 2024.
- [3] L. Atzori, A. Iera, and G. Morabito, "The internet of things: A survey," *Comput. networks*, vol. 54, no. 15, pp. 2787–2805, 2010.
- [4] N. Vanu, M. R. Hasan, T. R. Sikder, and Z. S. Tamanna, "AI-Driven Big Data Analytics for Precision Medicine: A Unified Framework Integrating Molecular Data Intelligence, Wearable Health Systems, and Predictive Modeling," *J. Comput. Sci. Technol. Stud.*, vol. 3, no. 2, pp. 124–141, 2021.
- [5] Md. Ishtiaque Alam, Mohammad Abdus Sami, Md Abu Kawsar Prodhan Hemal, and Md Lutfor Rahman, "Predictive Analytics and Decision Intelligence for Climate-Resilient Agritech Systems," *Acad. Glob. J. Comput. Sci. Technol. Stud.*, vol. 2, no. 1 SE-Research Article, pp. 44–56, 2023, doi: 10.32996/agjcs.2023.2.1.4.
- [6] J. Gubbi, R. Buyya, S. Marusic, and M. Palaniswami, "Internet of Things (IoT): A vision, architectural elements, and future directions," *Futur. Gener. Comput. Syst.*, vol. 29, no. 7, pp. 1645–1660, 2013.
- [7] S. Sicari, A. Rizzardi, L. A. Grieco, and A. Coen-Porisini, "Security, privacy and trust in Internet of Things: The road ahead," *Comput. networks*, vol. 76, pp. 146–164, 2015.
- [8] W. Shi, J. Cao, Q. Zhang, Y. Li, and L. Xu, "Edge computing: Vision and challenges," *IEEE internet things J.*, vol. 3, no. 5, pp. 637–646, 2016.
- [9] M. I. Alam, M. A. K. P. Hemal, M. A. Sami, and M. L. Rahman, "Robust and Interpretable Crop Recommendation: A Case Study on a Balanced Multi-crop Agronomic Dataset," *Eur. J. Ecol. Biol. Agric.*, vol. 1, no. 5 SE-Articles, pp. 168–184, Nov. 2024, doi: 10.59324/ejeba.2024.1(5).14.
- [10] T. R. Sikder, M. A. Siam, M. M. H. Melon, S. M. M. Uddin, S. C. Mohonta, and F. Karim, "A Multimodal Data Analytics Framework for Early Cancer Detection Using Genomic, Radiomic, and Clinical Big Data Fusion," *J. Comput. Sci. Technol. Stud.*, vol. 5, no. 3, pp. 183–188, 2023.
- [11] T. R. Sikder, S. Dash, B. Uddin, and F. Hossain, "AI-Powered Data Analytics and Multi-Omics Integration for Next-Generation Precision Oncology and Anticancer Drug Development," *Eastasouth J. Inf. Syst. Comput. Sci.*, vol. 1, no. 02 SE-Articles, pp. 153–170, Dec. 2023, doi: 10.58812/esiscs.v1i02.838.
- [12] M. A. Sami, M. A. K. P. Hemal, M. I. Alam, and M. L. Rahman, "Data Governance and Analytics Infrastructure for Scalable Decision-Making in Development and Agritech Programs," *Eur. J. Appl. Sci. Eng. Technol.*, vol. 2, no. 2, pp. 388–403, 2024.
- [13] F. Bonomi, R. Milito, J. Zhu, and S. Addepalli, "Fog computing and its role in the internet of things," in *Proceedings of the first edition of the MCC workshop on Mobile cloud computing*, 2012, pp. 13–16.